

Design S9043 • Lace Shawl



Size: upper width about 165cm [65"], height about 66cm [26"] (measured at centre of shawl).

Materials: Schachenmayr Letizia

(70% cotton, 17% polyamide, 13% viscose, about 115m / 50g [125.75 yds / 1.75 oz]), 250g [5 balls] in 00084 Mexico color.

One 6-7mm [US 10-10½] circular needle of any length.

Chain edge st: In every row slip 1st st purlways (with yarn in front of work); K last st at end of row.

1 double decrease: sl2togk, K1, pssso.

1 decrease: skp (= sl1k, K1, pssso).

Stocking stitch : K RS rows, P WS rows.

Basic pattern:

Row 1 (WS): Work chain edge st, K all sts, chain edge st.

Row 2: chain edge st, K3tog, yo, *K2tog, yo, rep from *, skp, chain selvage = 2 sts dec.

Row 3: chain edge st, K all sts and yo, chain edge st.

Row 4: chain edge st, K2tog, then K to the 3 centre sts of shawl, 1 double dec, K to 3 from end of row, skp, chain edge st = 4 sts dec.

Row 5: chain edge st, P2tog tbl, P to 3 from end of row, then P2tog, chain edge st = 2 sts dec.

For lace panel work rows 1 to 3 once, then rows 4 and 5 nine times, then row 4 once more = 22 rows. 66 sts are dec altog across these 22 rows.

Chevron pattern:

See chart. Only RS rows are shown; in WS rows P all sts and yo. Ignore empty boxes, these are construction markers only.

Work rows 1 to 19 once; dec 4 sts evenly across every RS row = 40 decs altog.

Tension: In St st 15-16 sts and 25 rows = 10cm [4"].

INSTRUCTIONS

Work shawl from longer outer edge up.

Cast on 293 sts and work rows 1 to 3 of basic patt, start with 1 WS row = 291 sts.

Now work chevron patt = 14 initial sts, 24-st rep 5 times, 24 centre sts once, 24-st rep 5 times, 13 final sts. After the 19th row 251 sts rem on the needle.

Cont in basic patt. Work rows 1 to 22 four times. After these 88 rows 11 sts rem on the needle.

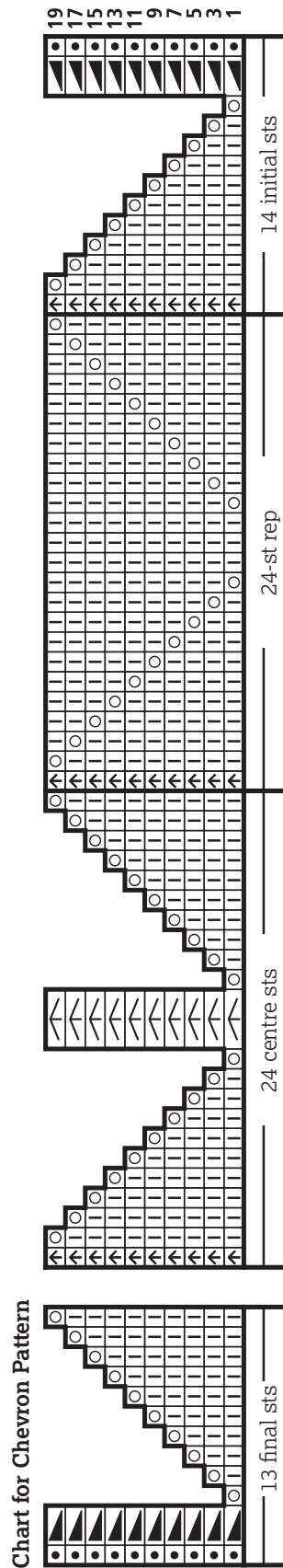
Now work 3 rows St st (start with 1 WS row) with dec as before = 3 sts. Purl these 3 sts tog, then pull yarn through the last st and darn away.

Block shawl to measurements, cover with a damp cloth and allow to dry.

Abbreviations

altog = altogether • cm = centimetres • cont = continue • dec = decrease • g = grams • K = knit • K2tog = knit 2 together • m = metres • mm = millimetres • oz = ounces • P = purl • patt = pattern • pssso = pass slipped st(s) over • rem = remainder/ing • rep = repeat • RS = right side • skp = slip 1 knitways, K1, pssso • sl1k = slip 1 knitways • sl2togk = slip 2 together knitways • St st = stocking stitch • st(s) = stitch(es) • tog = together • WS = wrong side • yds = yards • yo = yarn over

Design S9043 • Lace Shawl



Legend

- ◻ = 1 chain edge st
- ◻ = K1
- ◻ = yo
- ◻ = K2tog
- ◻ = skp
- ◻ = 1 double dec
- ◻ = dec 2 as for ◻